

Setting up SMS Messaging in Take2

Access to the SMS Text Messaging functionality requires:

- Installation of a new Take2 front end – version 8.4.6 or higher
- Attaching the GSM router on the server
- Installation of the Take2 SMS server-side application

Handset/Modem Requirements

If you wish you may source your own phone/modem. Any phone/device must:

- Be a GSM compatible device for the NZ market.
- Have a RS-232 serial interface (9-pin).
- Have a Serial Cable for GSM connection.
- Be OpenAT capable.
- Be SMS (text and PDU modes) compatible.
- Be supplied with relevant documentation (user manual and AT command set documentation).

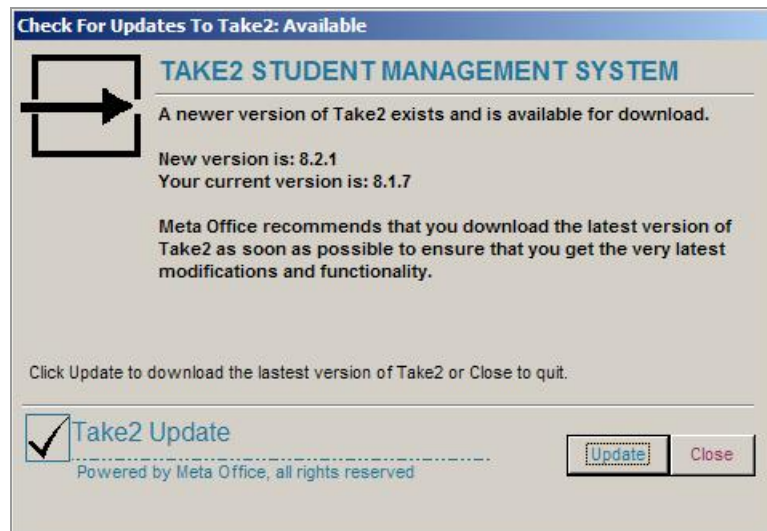
We strongly recommend that you purchase the device through us as we know the device that we supply will work. If you opt to supply your own device we will need that device and its documentation for testing purposes.

Downloading the Update

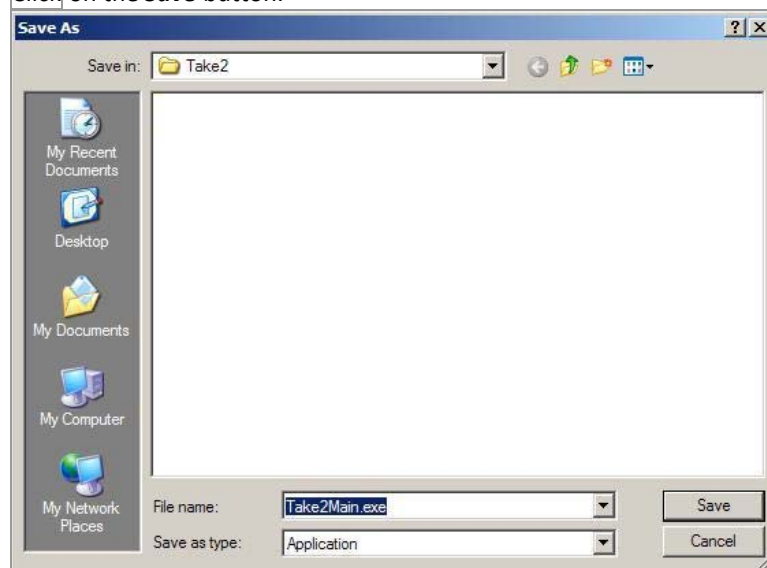
1. Click on the **Take2 Student Management** button in the Main module.



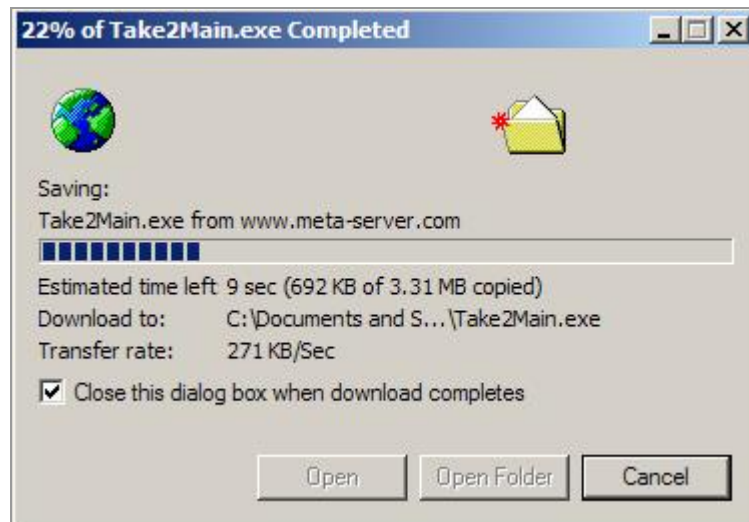
2. Click on the **Additional Functionality** button.
3. Click on the **Check for Updates** button.
4. Click on the **Next** button.



5. If the (v8.4.6 or higher required) update is ready for download the **Update** button will become available.
6. Click on the **Update** button.
7. Click on the **Download** button.
8. Click on the **Save** button.



9. Specify a location to save the update file. Make sure that you can find the file again!
10. Click on the **Save** button.



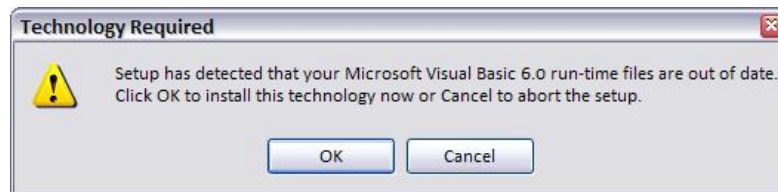
11. Wait for the update to finish downloading.
12. Once the download is complete, apply this updated front end.

Attaching the modem to the server

Connect the modem to your server's serial port. A USB adaptor can be purchased separately if there is no available serial port.

Installing the server side application

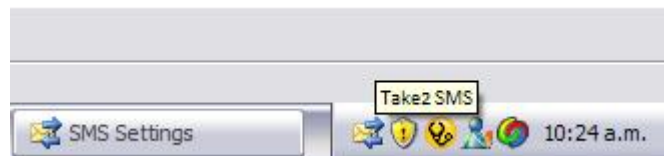
1. Double-Click on the **Setup** program that has been emailed to you.
2. If the Visual Basic 6 run-time files are not installed you will be prompted to install these. Click on the **OK** button to install.



3. Follow the on-screen instructions to install the Take2 SMS application.

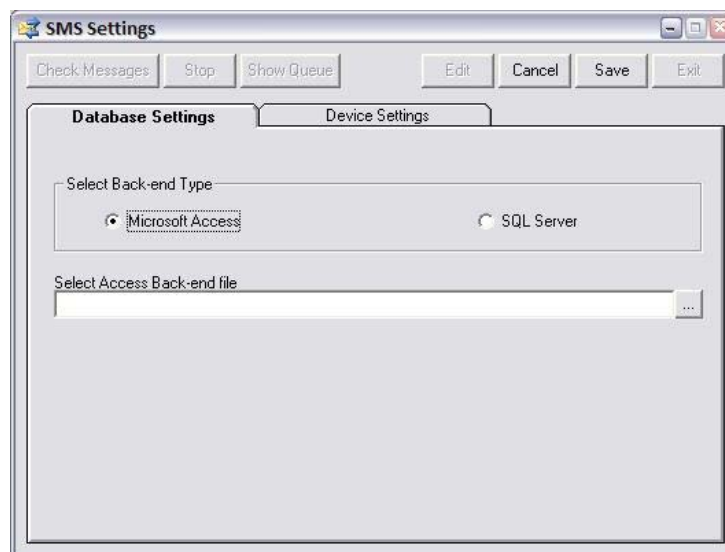


4. Ensure the Take2 SMS application is running on the server.



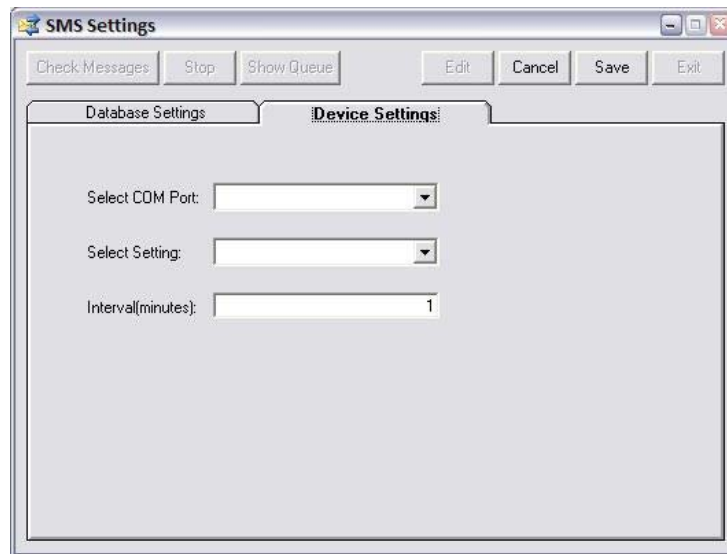
Configuring the server side application

1. Click on the **Edit** button.
2. Click on the **Database Settings** tab.
3. Select the Back-end Type



4. Select the Access data file or configure the login correct settings for SQL Server.

5. **Click** on the **Device Settings** tab.
6. Configure the COM port and settings appropriate to your server/computer. Please contact the helpdesk if you require assistance setting these.



7. Enter the desired send interval.
8. **Click** on the **Save** button.
9. **Click** on the **Check Messages** button to allow the modem to check queued messages stored in Take2.